

The DoD Sustainable Ranges Initiative Tools to Sustain the Mission



**Jan Larkin
Range Sustainment Outreach
Coordinator
Janice.larkin@osd.mil**



TRAINING AND TESTING ARE MORE IMPORTANT THAN EVER

- Realistic training requires realistic training environments
- The ability to field and use advanced military technology is fundamental to U.S. warfare
- Our weapons and tactics require increasingly large battlespaces
- Readiness is perishable – Skills must be maintained through regular training
- OPTEMPO, PERSTEMPO are up; ready access to training is essential
- Live Fire is Fundamental to Training



***We must train as we fight;
because we fight as we train***



RANGES ARE AT RISK

Encroachment: Restrictions that inhibit accomplishment of our live training and testing as required

- Force Readiness is fundamentally linked to the quality and frequency of test and training
- The impact of encroachment is broad -- affecting our ability to execute realistic air, ground, and naval training across the nation, as well as beyond its borders.





Recognizing the Problem



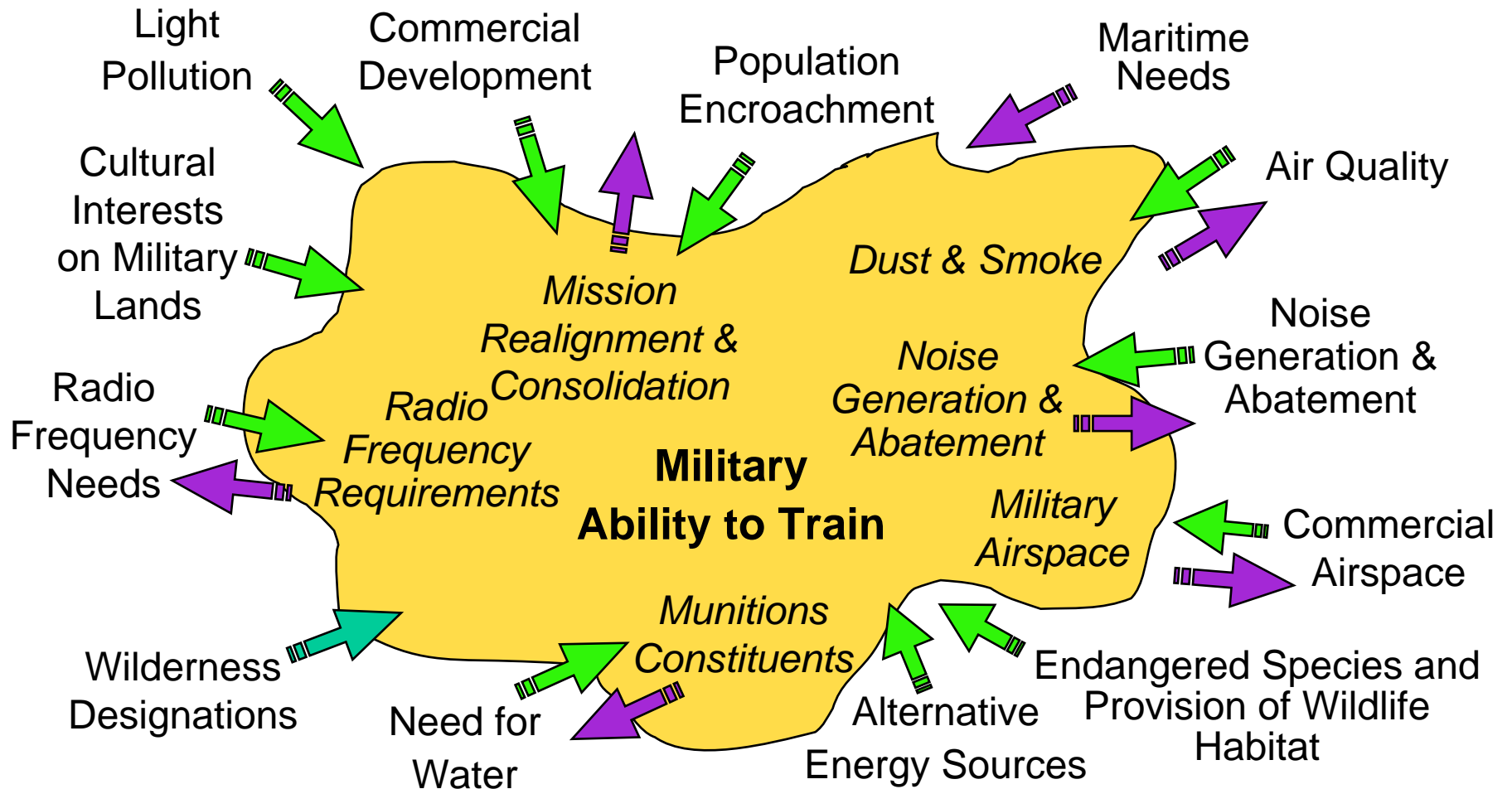
Encroachment “is a problem that is real, it is serious. The United States needs bases, it needs ranges, it needs test ranges. And it cannot provide the training and testing that people need before they go into battle unless those kinds of facilities are available.”

“Each year that goes by, there are greater and greater pressures on them.”

Testimony to the Senate Armed Services Committee,
January 11, 2001



ENCROACHMENT PRESSURES Work Both Ways



Reduced Flexibility for the Military and the Community⁵



Compatible Land Use Tools

- Better communication between installation and community
- Leveraging of State support and State Initiatives
- Improvement of local zoning and comprehensive planning
- Joint Land Use Studies
- GIS and decision-support information
- Partnerships to protect land and secure easements

***More effective Regional, State, and Local
Collaboration and Planning***



Encroachment Partnering Tool — 10 USC 2684a

- Congress enacted in 2002 new land conservation authorities (DoD urged passage as part of its Sustainable Ranges legislative agenda)
- Authorizes military departments to sign agreements with state or local governments or private conservation groups to:
 - Limit use or development of property near military bases
 - Preserve habitat to relieve environmental restrictions on military operations



Does not authorize land acquisition for active military use



Army Compatible Use Buffer Program

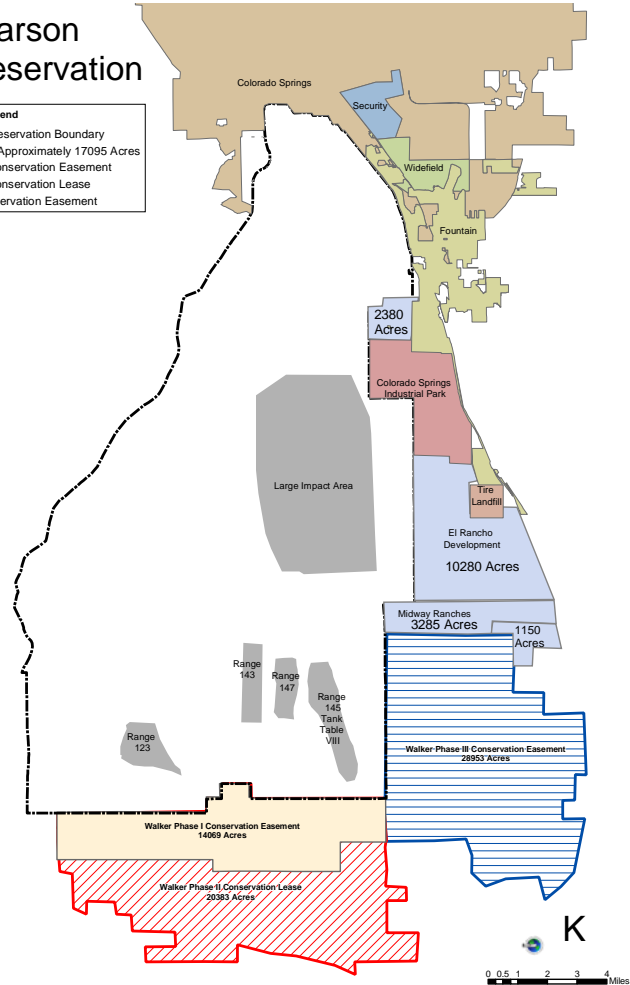


- Protecting important installations
- Respecting landowners
- Conserving our natural heritage

Fort Carson Military Reservation

Legend

- Fort Carson Military Reservation Boundary
- Proposed Acquisition-Approximately 17095 Acres
- Walker Phase I & II Conservation Easement
- Walker Phase I & II Conservation Lease
- Walker Phase III Conservation Easement



Proposed ACUB Sites



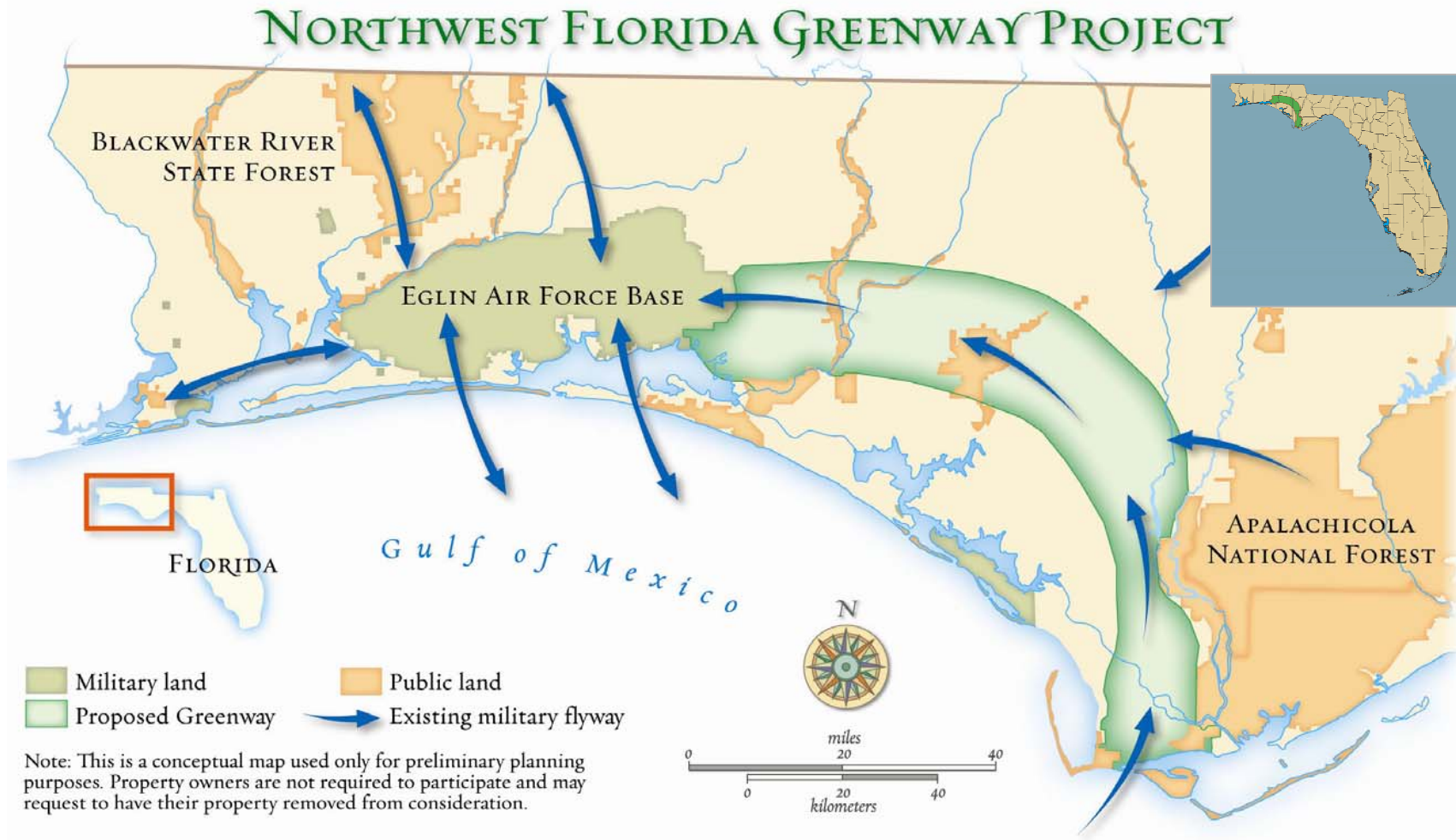
Regional Collaboration Pilot Southeast Regional Partnership

BACKGROUND

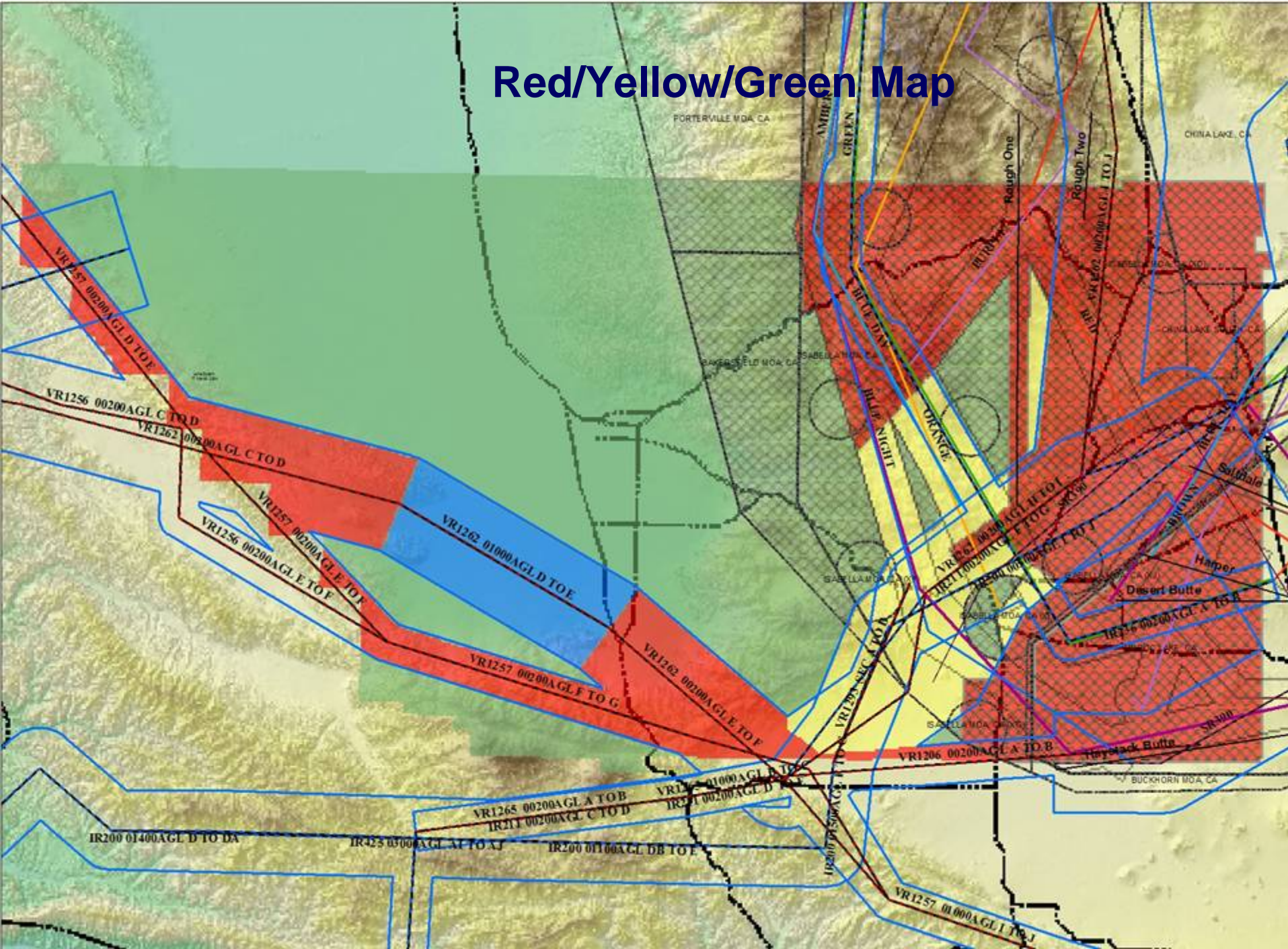
- States' interest to establish a regional partnership between DoD, states and other stakeholders
- Opportunity to initiate and institutionalize better regional, state, and local coordination
- DoD objective: protect and enhance access to our test and training ranges.
- Two SERPPAS Meetings to date
 - July 27-28, 2005, Chapel Hill, NC
 - January 11-12, 2006, Jacksonville, FL



Northwest Florida Greenway



Red/Yellow/Green Map





Other Tools for Better Planning

- Primer Series
 - How to Work with State Legislators
 - How to Work with Local Governments
 - How to Work with Land Trust Organizations
- Non-Government Organizations (NGOs)
 - National Governors' Association (NGA)
 - Environmental Council of the States (ECOS)
 - National Association of State Legislatures (NCSL)
 - International City/County Management Association (ICMA)
 - National Association of Counties (NACo)



Linking Landscapes, Linking Missions

- Linking efforts with other stakeholders and federal agencies
- Supporting community-driven planning and compatible land use
- Sharing GIS and decision-support information
- Participating in regional broad-based conservation efforts
- Working with interested parties to protect landscapes and working lands

“The old way of approaching conservation planning -- through individual efforts, and without cross-governmental partnerships -- will not work in a future of ever expanding competition for scarce resources.”

--Secretary Donald Rumsfeld